



San Bernardino County Pool Summary (as of 10/31/09)

Security Type	Par Value	Amortized Cost	Market Value	Market % of Portfolio	Yield to Maturity At Cost	Weighted Avg. Maturity	Modified Duration
Bankers Acceptances	0.00	0.00	0.00	0.0%			
Certificates of Deposit	370,000,000.00	370,006,490.00	370,008,443.55	8.8%	0.21%	24	0.07
Collateralized CD	0.00	0.00	0.00	0.0%			
Commercial Paper	500,050,000.00	499,948,894.04	499,946,849.50	11.9%	0.19%	35	0.10
Corporate Notes	25,000,000.00	25,000,000.00	25,000,000.00	0.6%	3.06%	4	0.01
Federal Agencies	2,686,182,000.00	2,699,203,482.80	2,728,950,485.71	65.1%	2.19%	436	0.70
Money Market Funds	208,000,000.00	208,000,000.00	208,000,000.00	5.0%	0.07%	1	0.003
Municipal Debt	0.00	0.00	0.00	0.0%			
Repurchase Agreements	0.00	0.00	0.00	0.0%			
TLGP Corp. Debt	100,000,000.00	100,070,800.25	100,608,150.00	2.4%	1.23%	388	1.05
U.S. Treasuries	255,000,000.00	257,539,714.60	259,977,345.37	6.2%	1.07%	790	2.14
Total Securities	4,144,232,000.00	4,159,769,381.69	4,192,491,274.13	100.0%	1.58%	349	0.67
Cash Balance	276,096,683.73	276,096,683.73	276,096,683.73				
TAGP/FDIC NOW Balance	200,000,000.00	200,000,000.00	200,000,000.00				
Total Investments	4,620,328,683.73	4,635,866,065.42	4,668,587,957.86				
Accrued Interest		16,338,836.89	16,338,836.89				
Total Portfolio	4,620,328,683.73	4,652,204,902.31	4,684,926,794.75				

1. Yield for the money market funds is a weighted average of the month-end yields for the Federated, Goldman, and Fidelity money market funds.

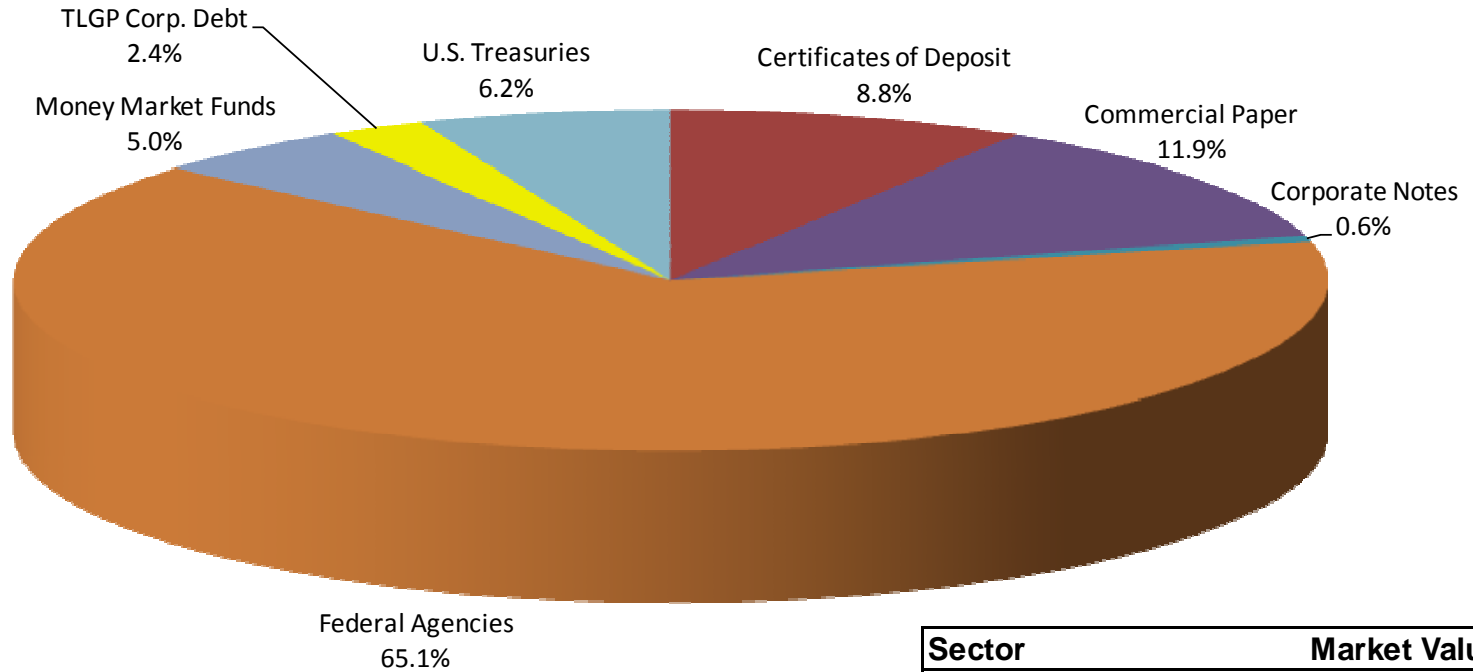
2. Statistics for the total portfolio include money market funds.

3. Market prices are derived from closing bid prices as of the last business day of the month as supplied by F.T. Interactive Data, Bloomberg, or Telerate. Prices that fall between data points are interpolated.



San Bernardino County Pool

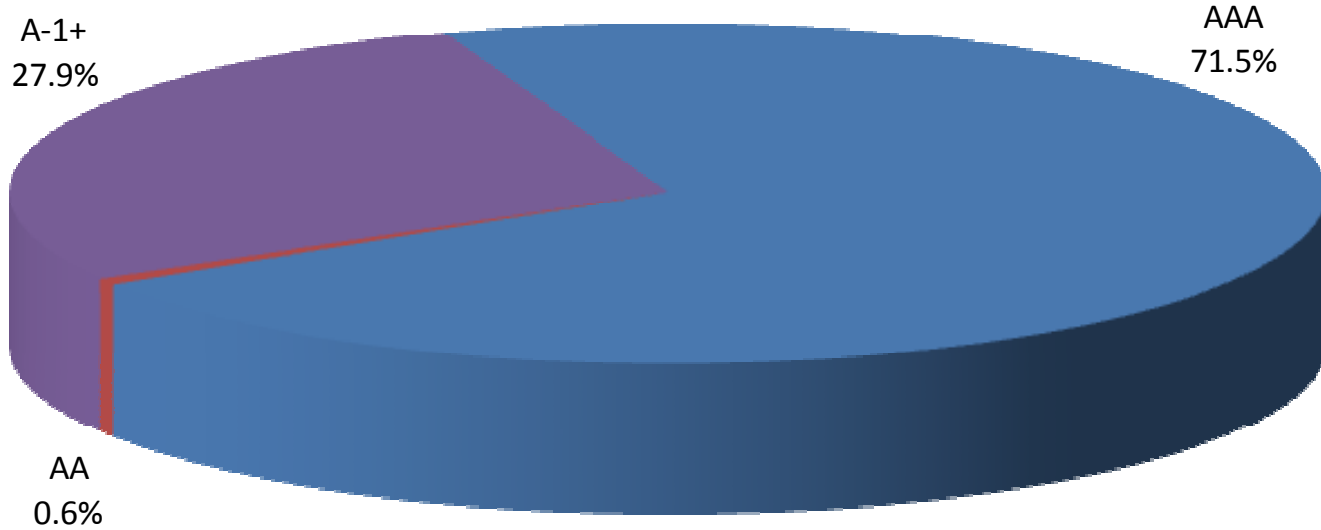
Sector Distribution (as of 10/31/09)



Sector	Market Value
Bankers Acceptance	0.00
Certificates of Deposit	370,008,443.55
Collateralized CD	0.00
Commercial Paper	499,946,849.50
Corporate Note	25,000,000.00
Federal Agencies	2,728,950,485.71
Money Market Funds	208,000,000.00
Municipal Debt	0.00
Repurchase Agreement	0.00
TLGP Corp. Debt	100,608,150.00
U.S. Treasuries	259,977,345.37



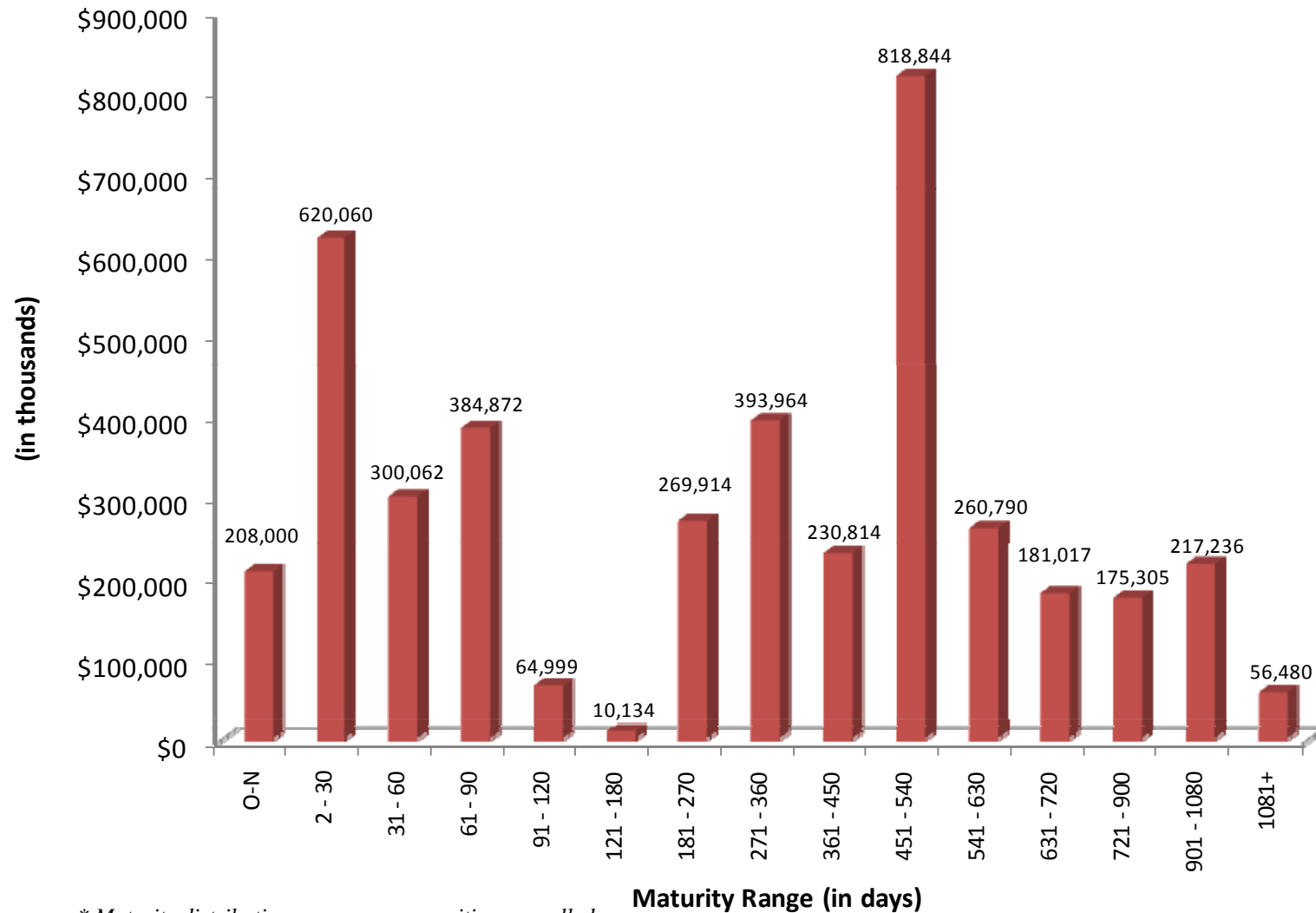
San Bernardino County Pool Credit Quality Distribution (as of 10/31/09)



Credit Rating	Market Value
A-1+ (Short-Term)	1,169,889,202.30
A-1 (Short-Term)	0.00
AAA (Long-Term)	2,997,602,071.83
AA (Long-Term)	25,000,000.00



San Bernardino County Pool Maturity Distribution (as of 10/31/09)



* Maturity distribution assumes no securities are called



San Bernardino County Pool Portfolio Yield Summary

Month	Yield to Maturity At Cost
October 2008	3.14%
November 2008	2.98%
December 2008	2.63%
January 2009	2.56%
February 2009	2.26%
March 2009	2.10%
April 2009	1.87%
May 2009	1.93%
June 2009	1.85%
July 2009	1.72%
August 2009	1.78%
September 2009	1.66%
October 2009	1.58%

1. Gross yields not including non-earning assets (compensating bank balances) or administrative costs for management of the pool.
2. All historical yields restated to include money market funds.